

Item Number:000055

RC Electric Micro Helicopter



规格型号:

主旋翼直径: $\Phi 460\text{mm}$
 总重量: 约410g
 机身长: 510mm, 宽: 110mm, 高: 260mm
 电机型号: 370马达*2pcs
 装配: RTF
 发射机: 标准四通道发射机 (带教练开关,)
 混控系统: 接收机加三合一控制器
 伺服器: (重量: 7.5g, 扭力: 1kg.cm, 速度: 0.1s/60°)
 电池: 11.1V 800mAh 锂聚合物电池
 标准配备: 0.6A 充电器、电源适配器、干电池4个、备用桨2对。

Specification:

Main rotor diameter: $\Phi 460\text{mm}$
 Weight: 410g
 Size: Length:510mm,width:110mm,height:260mm
 Power system: 370 motor*2pcs
 KIT/ARF/RTF: RTF
 Transmitter: 4 CH (including training switch and simulator port)
 Mix controller: 3 in 1 controller
 Servo: Digital servos 7.5g,Torque: $\geq 1\text{kg}\cdot\text{CM}$,Speed:0.1S/60°
 Battery: 11.1V 800mAh Li-polymer battery
 Standard accessories: 0.6A charger、adaptor、2 pairs of spare oars、4"AA" batteries

设计特点:

配置两个370电机, 数字伺服器, 新式ESKY 4通道发射机/平衡杆采用铜质平衡锤, 更好的稳定直升机的各种飞行状态, 外壳采用丝印工艺, 色彩亮丽光泽度高/ 新型塑胶滑梯, 可以适宜不同起飞与飞行状态, 对初学者有很大的帮助作用. 在微风情况下可以进行室外飞行.

Product features:

Driven by two 370 super motors, equipped with digital servo and updated Esky 4ch transmitter/ The copper counterweight of flybar stabilizes provides heli in various flight states, silk-printing process provides bright colored & high lustrous canopy/ New strengthful landing skid, suits in various take off & flight conditions and is helpful to the beginners. It's able to fly outdoors in breeze.

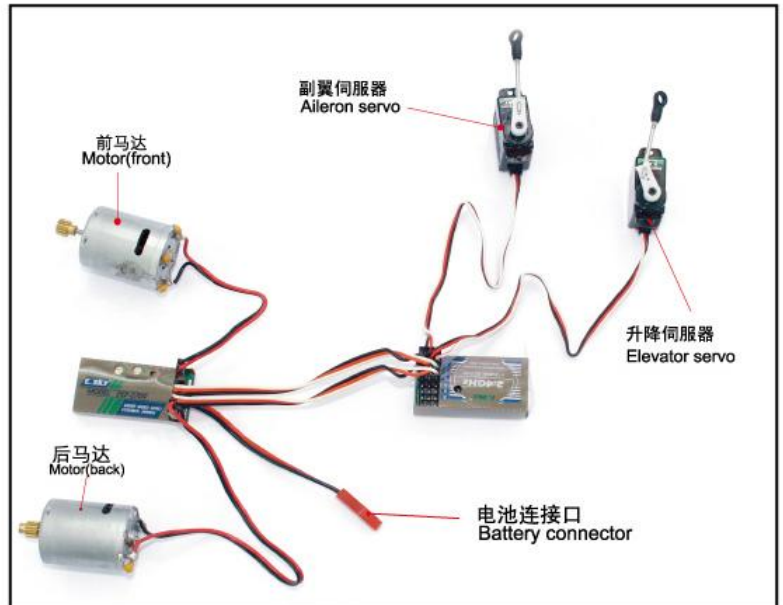
The operation guide before fly

起飞操作步骤示意图



Construction schematic diagram to inner equipments

机体局部设备示意图



Main blade angle of attack adjustment

主旋翼攻角的调整



Main blades are not tracking in the same plane
主旋翼旋转不在同一平面



用左手抓住桨的根部，用右手捏住桨叶由里向外滑动，重复此动作。Please adjusting the main blade like this way until the tips are tracking in the same plane



Main blades rotate in same plane
主旋翼旋转在同一平面

2.4G遥控设备 About 2.4G system

在出厂之前每台直升机的遥控系统编码对频都已完成，不须另做调试。

正常工作表现方式如下：

打开发射机电源后，前3秒发射机2.4G信号指示灯闪烁，该状态表示发射机所发的是编码对频信息，3秒过后2.4G状态指示灯由闪烁变为恒亮则表示发送通道数据；再接通四合一电源，观察四合一2.4G信号指示灯由闪烁两次转为恒亮，表示已成功收到通道数据可以飞行。

打开发射机，连接直升机电源，四合一信号指示灯闪烁两次之后熄灭，表示编码对频工作失败，需要洗码和重新编码对频。

1.如何洗码

关掉发射机

接通四合一电源

在编码对频按键开关上按住1-2秒，

四合一LED灯会快速闪烁不止，表示洗码已完成。

2.重新编码对频

先断开四合一电源，再接通四合一电源，信号指示灯慢闪烁表示接收机正在接收机身码，这时打开发射机电源，四合一信号指示灯由慢闪变为快闪，然后转为恒亮，表示对码成功。（注意：发射机只有在打开发射机电源的前3秒发码，如果3秒后四合一没有成功收到码，请重新打开发射机电源。）

Binding for RC System of each model has been completed in factory, without needing to debug again.

Normal operation manifested as below:

Power on the transmitter, the indicator of 2.4G transmitter will twinkle for 3 seconds, which indicates that transmitter is sending code binding information. After 3 seconds, the twinkling 2.4G transmitter indicator becomes solid, indicating that sending the channel data; Then connect the 4 in 1 mix controller, observe the 4 in 1 mix controller, 2.4G transmitter indicator twinkles two times and gets solid, which indicates that the reception of the channel data is successful and are ready to fly.

Turn on the transmitter and power on the helicopter. LED indicator of 4 in 1 mix controller go out after twinkling two times, indicating that binding is failing and need to unbind firstly and rebind.

1.How to unbind?

Turn off the transmitter,

Connecting the battery to 4 in 1 mix controller

State indicator

Bind keystoke

Press the bind keystoke for 1 or 2 seconds

LED indicator of 4 in 1 mix controller will twinkle constantly, which indicates that unbinding has completed.

(As shown in the right picture)

2.Rebind

Firstly disconnect 4 in 1 mix controller, then connect the 4 in 1 mix controller to the power, the state indicator twinkles slowly, which indicates that 4 in 1 mix controller is receiving signal. Then Power on the transmitter, if the indicator of RX display from slow twinkling to rapid twinkling, then solid, which indicate the binding is successful.(Note: transmitter just will transmit code in first 3 seconds, if 4 in 1 mix controller can not receive code within 3 seconds, please turn on the transmitter again.)

注意事项

1.打开发射机电源发射机信号指示灯在前3秒内闪烁50次为编码对频时间，编码对频后指示灯恒亮

（注意：在编码对频过程中，必须先接通四合一电源，然后打开发射机电源）。

2.在编码对频不成功时，四合一的信号指示灯闪烁两次后熄灭。

3.由于各厂家产品拥有不同的频段、频道与不同的编码、解码方法，不同品牌的产品是互不兼容的，所以只能使用同一品牌的遥控系统

4.每一次在编码对频时须重新将发射机电源打开。

Remarks:

1.Power on the transmitter, indicator twinkles 50times within 3 seconds of binding period, the indicator get solid after the binding.(Please note that in the process of binding, first connect the or 4 in 1 mix controller before powering on the transmitter)

2.If binding is not successful, the indicator of 4 in 1 mix controller will twinkle two times then go out.

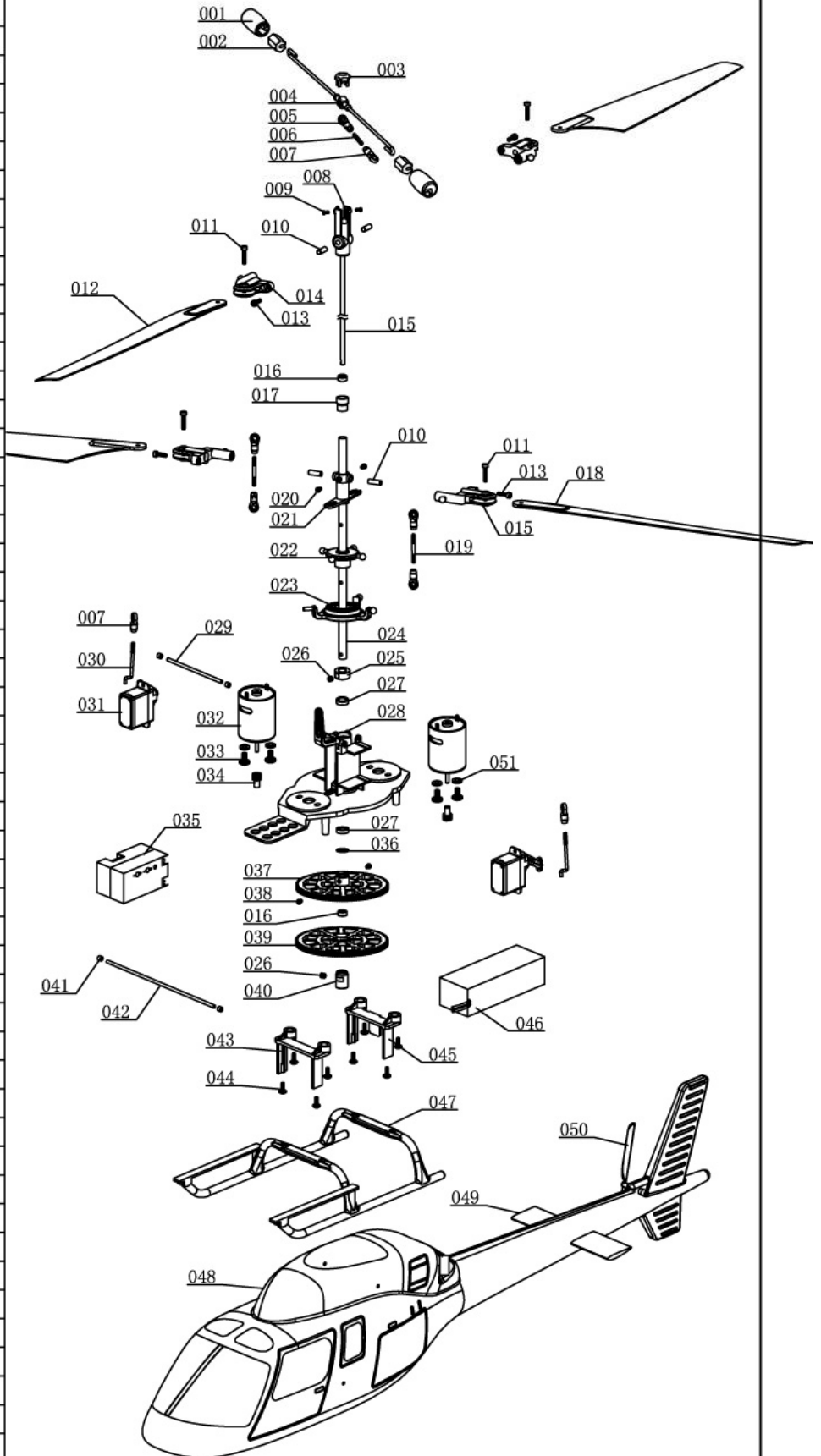
3.Since different manufacturers have different frequency band, channel and different coding and decoding method, so different products are incompatible, all RC system should be under the original trademark.

4.Do turn on the transmitter once again in each binding.

Exploded view

E SKY®


序号 Item Number	名称 Description	用量 Qty need	规格 specification
001	稳定锤Stabilizing weight	2	
002	配重块Balance weight	2	
003	旋转头盖Switching brainpan	1	
004	平衡翼杆Flybar	1	
005	单孔拉杆B Control link B	1	
006	无头螺杆Screw w/o head	1	M2*10
007	单孔拉杆A Control link A	7	
008	主旋转头A Inner shaft A	1	
009	圆头十字螺丝Round cross screw	2	ISO1.4*3
010	销子Dowel	4	Ø3*8
011	内六角螺丝Inner hexagonal screw	4	M2*10
012	主旋翼A Plastic blade A	2	
013	内六角螺丝Inner hexagonal screw	4	M2*8
014	主翼夹头Main blade clamp	4	
015	主轴A Main axis A	1	Ø3*188
016	滚珠轴承Rolling ball bearing	2	Ø3*Ø6*2.5
017	轴承座Bearing set collar	1	
018	主旋翼B Plastic blade B	2	
019	无头螺杆Screw rod w/o head	2	M2*20
020	半螺纹圆头十字螺丝 Half thread cross screw with round head	2	M2*3
021	主旋转头A Inner shaft A	1	
022	倾斜内盘Inner swashplate	1	
023	倾斜外盘Outer swashplate	1	
024	主轴B Main axis B	1	Φ4*Φ5*149
025	定位环Fix collar	1	Ø5*Ø10*5
026	无头内六角螺丝 Inner hexagonal screw w/o head	2	M3*3
027	滚珠轴承Rolling ball bearing	2	Ø5*Ø8*2.5
028	机架Main frame	1	
029	机身支杆A Airframe link bar A	1	∅2*70mm
030	拉杆Push-rod	2	M2*29
031	伺服器Servo	2	
032	马达Motor	2	370
033	圆头十字螺丝Round cross screw	4	ISO3.0*5.8
034	主马达齿Main motor gear	2	M=0.5 T=11
035	三合一接收机"3in1"+Receiver	1	
036	台阶垫片Sidestep lusion	1	Ø5*Ø8*5.5
037	齿轮B Gear B	1	M=0.5 T=120
038	半螺纹圆头十字螺丝 Half thread cross screw with round head	2	M2*2.5
039	齿轮A Gear A	1	
040	齿轮固定环Gear fix collar	1	Ø3*Ø8*11
041	胶套Rubber sheath	4	Φ1.5*Φ3*4
042	机身支杆B Airframe link bar B	1	Ø2*100mm
043	前电池架Front battery holder	1	
044	伞头十字螺丝Cross umbrella head screw	8	M2*6
045	后电池架Back battery holder	1	
046	锂电池Li-polymer battery	1	11.1V800mAh
047	滑撬Skid set	1	
048	机身Airframe	1	
049	水平翼Horizontal fin	1	
050	尾旋翼Tail rotor blade	1	
051	垫片B Spacer B	4	∅3.1*∅6*0.8



机体炸散图

Spare parts picture

E SKY®

 <p>Model 1 Model 2 2.4GHz 001725/000987</p>	<p>001367</p> 	<p>001337</p> 	<p>001336</p> 	<p>000512</p> 
<p>发射机 Transmitter</p> <p>000155</p>	<p>接收机 Receiver</p> <p>000152</p>	<p>三合一 "3in1"</p> <p>000204</p>	<p>锂电池 Li-polymer battery</p> <p>000837</p>	<p>电源适配器 Switching adapter</p> <p>000838</p>
 <p>伺服器 Servo</p> <p>000659</p>	 <p>锂电池充电器 Charger</p> <p>000648</p>	 <p>工具组 Allen key/paster strap</p> <p>000649</p>	 <p>前马达组 Motor(front)</p> <p>(11T)</p> <p>000654</p>	 <p>后马达组 Motor(back)</p> <p>(11T)</p> <p>000196</p>
 <p>稳定锤 Stabilizer set</p> <p>000655</p>	 <p>主旋翼头A Center hub set A</p> <p>000647</p>	 <p>主旋翼头B Center hub set B</p> <p>000839</p>	 <p>螺丝组 Screw set</p> <p>000650</p>	 <p>轴承 Bearing</p> <p>$\Phi 3 \times \Phi 6 \times 2.5$</p> <p>000651</p>
 <p>轴承 Bearing</p> <p>$\Phi 5 \times \Phi 8 \times 2.5$</p> <p>000652</p>	 <p>主旋翼A Plastic blade A</p> <p>000653</p>	 <p>主旋翼B Plastic blade B</p> <p>000656</p>	 <p>主翼夹头 Main blade clamp</p> <p>000657</p>	 <p>主动齿轮A组 Driving gear set A</p> <p>000658</p>
 <p>主动齿轮B组 Driving gear set B</p> <p>000660</p>	 <p>倾斜盘 Swashplate set</p> <p>000661</p>	 <p>轴承固定组 Bearing fixed set</p> <p>000662</p>	 <p>单孔拉杆 Single hole push rod</p> <p>000663</p>	 <p>双孔连杆 Ring-link push-rod</p> <p>000664</p>
 <p>电池架 Battery hanger set</p>	 <p>机壳支杆 Cabin shore set</p>	 <p>机架 Main frame</p>	 <p>滑橇组 Landing skit set</p>	 <p>机壳组 Canopy</p>